

# SAINT LOUIS COUNTY RECYCLES

Here's What You Can Now Recycle Curbside!



## RESIDENTIAL CONTAINERS

Look for the recycling symbol on the bottom of plastic containers. #1, 2, 3, 4, 5 and 7 are acceptable (everything except #6).



**1** PLASTIC RESIN  
Soda, water, mouthwash, ketchup and salad dressing bottles



**2** CLEAR PLASTIC  
Milk and juice jugs



**2** COLORED PLASTIC RESIN  
Detergent, fabric softener, shampoo and cosmetic containers



**3** PLASTIC RESIN  
Narrow neck containers, health and beauty aid products, household cleaners



**4** PLASTIC RESIN  
Squeezable packaging and grocery containers



**5** PLASTIC RESIN  
Containers for yogurt, cottage cheese, margarine, etc.



**3** PLASTIC RESIN  
Narrow neck containers



Steel and tin cans



Milk and juice cartons, juice boxes (even ones with caps and lids)



Plastic buckets (5-gallon size maximum)



Clean aluminum cans, foil, pie pans, and food trays



Glass bottles and jars of any color. No window glass, mirrors, dinnerware or ceramics

**NO plastic bags of any kind should be placed in your curbside cart.**

## RESIDENTIAL PAPER PRODUCTS



Newspaper, including inserts (remove plastic sleeves)



Cardboard



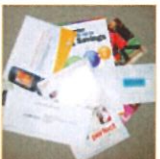
Kraft bags (brown paper bags)



Office, computer, notebook, and gift wrap paper



Carrier stock (soda and beer can carrying cases)



Junk mail and envelopes (even with plastic windows)



Chipboard (cereal, cake and food mix boxes, gift boxes, etc.)



Paperback books (no hardcover books)



Magazines, catalogs, and telephone books

### NOTES

1. Please rinse containers.
2. Caps, lids, and labels are okay.
3. No containers for motor oil, insecticide, herbicide, or hazardous chemicals.
4. No plastic bags of any kind. (Return shopping bags to the store.)
5. No #6 plastics (Styrofoam™, polystyrene).
6. No paper towels, tissues or wipes.

REDUCE • REUSE • RECYCLE!  
**GO GREEN!**  
A SAINT LOUIS COUNTY HEALTH DEPARTMENT INITIATIVE

Saint Louis  
**COUNTY**  
HEALTH